

Ms. Telumbre Music class
April 8
(Pk3-Pk4)

Directions:

- Students are to trace the bass clef word
- Student are to color their bass clef sheet
- Finally they get to sing along with Ms.T
- Students may turn in work by taking a picture and sending to my email before next week (april15)
- ltelumbrestbruno@gmail.com



ENJOY!!

Ms. Telumbre

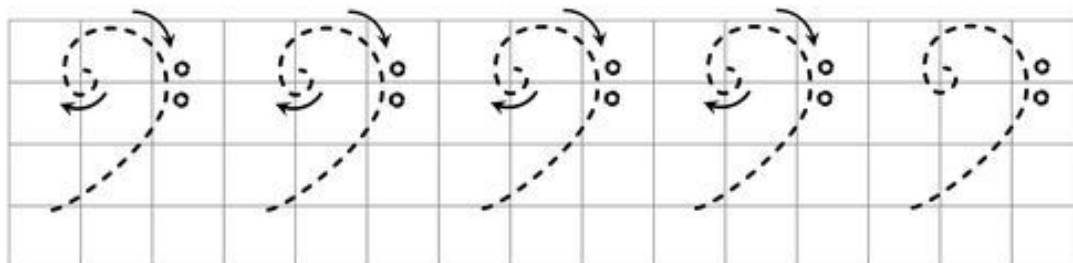
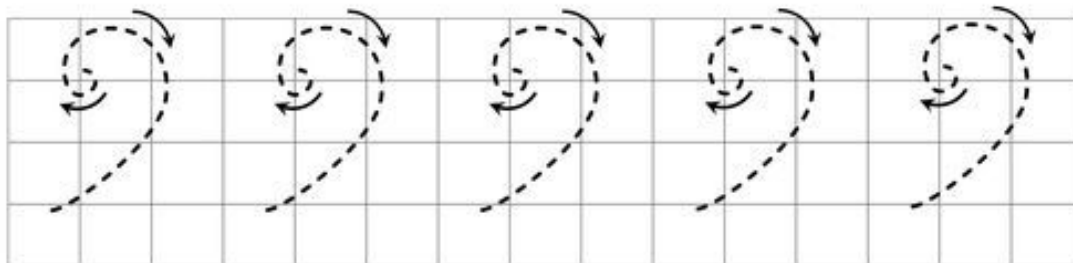
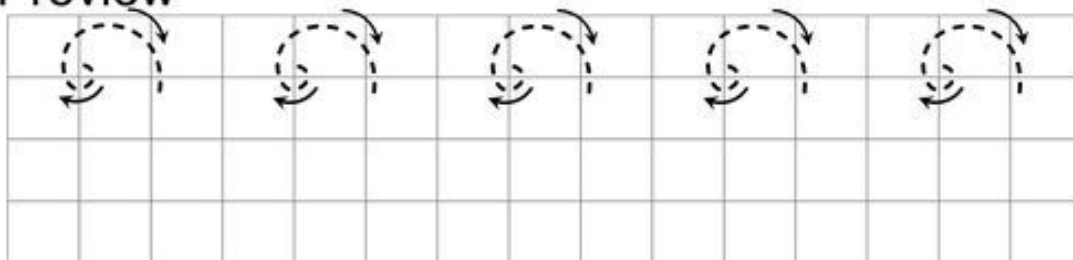
My name is _____

Class _____

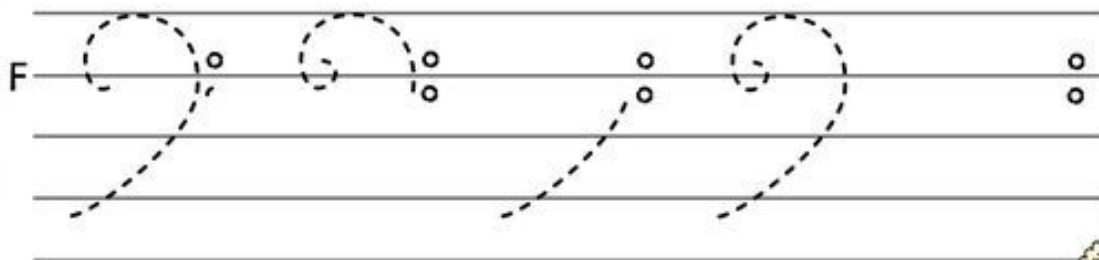
Directions:

Trace the Bass Clef

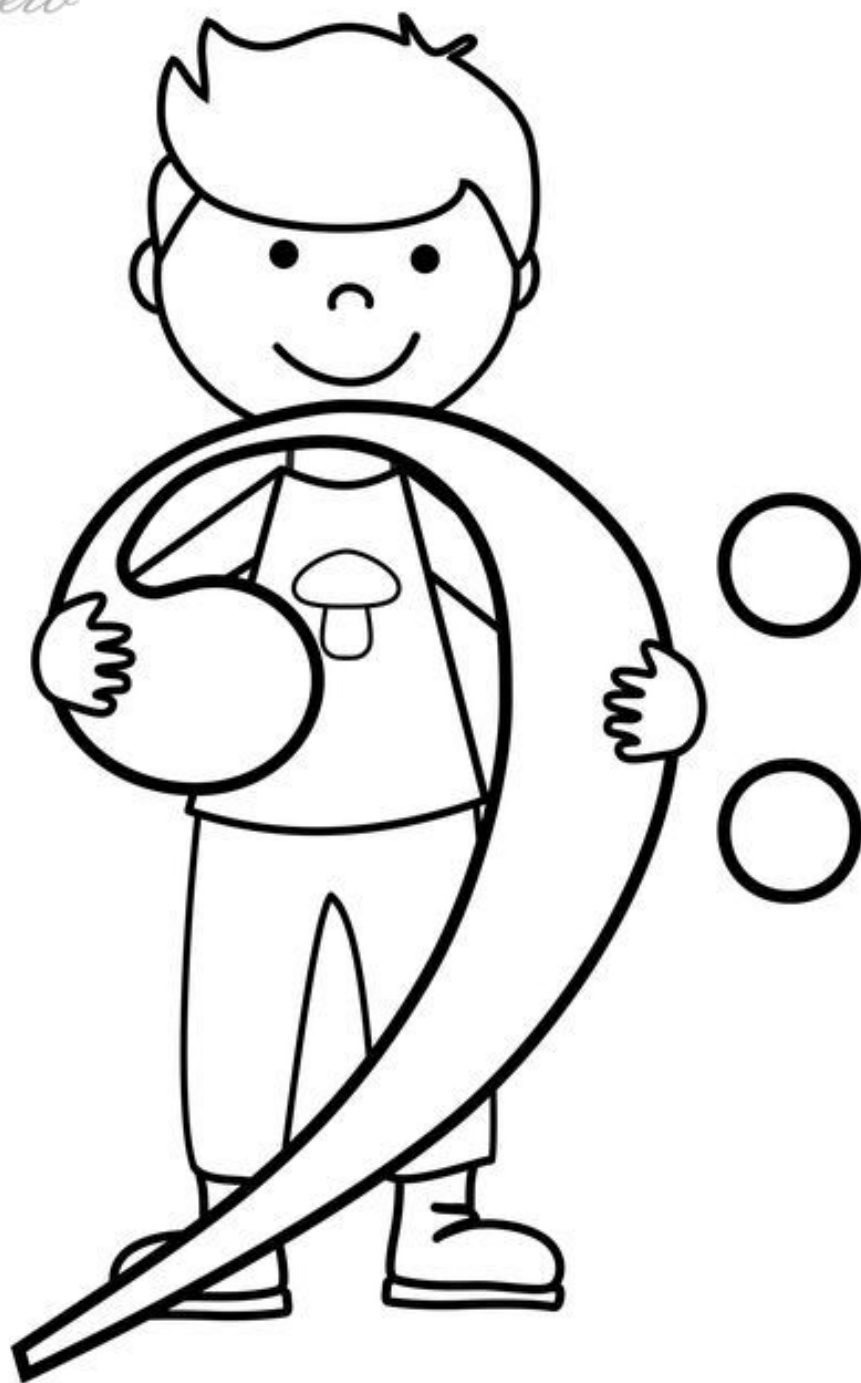
Preview



These Bass clefs have parts missing.
Complete them and then trace and color them.



Preview



Bass clef