

Ms. Telumbre Music class
May 1st
(1st- 2nd grade)

Directions:

- Students are to trace/color the eighth note
- Trace/color sixteen note
- Draw 3 eighth notes and 3 sixteen notes on each staff
- Finally they get to sing along with Ms.T
- Students may turn in work by taking a picture and sending to my email before next week (May 8)
- ltelumbrestbruno@gmail.com



ENJOY!!

Ms. Telumbre

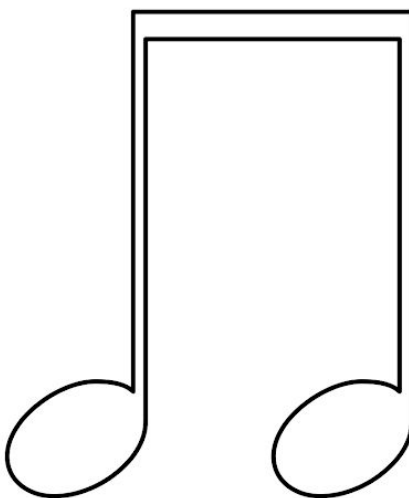
preview

name _____

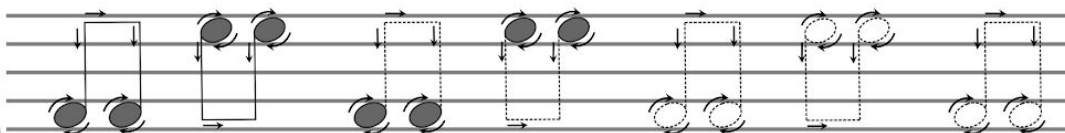
class _____

Two Eighth Notes

Color it!



Trace it on the staff!



Trace it!

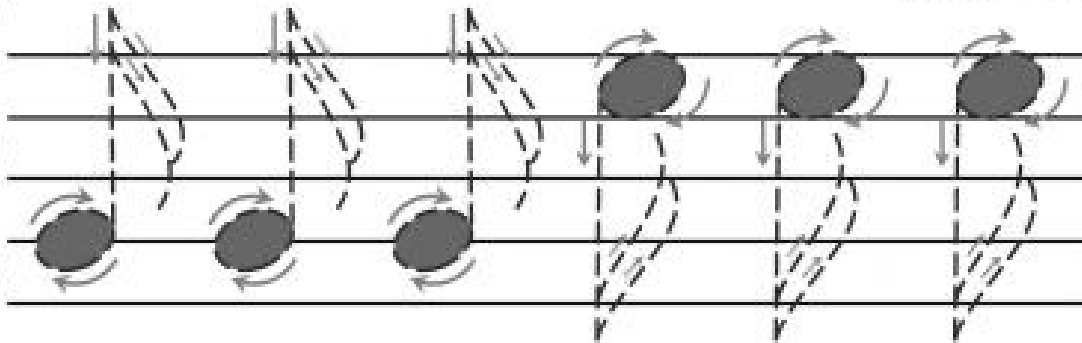
Two Eighth Notes



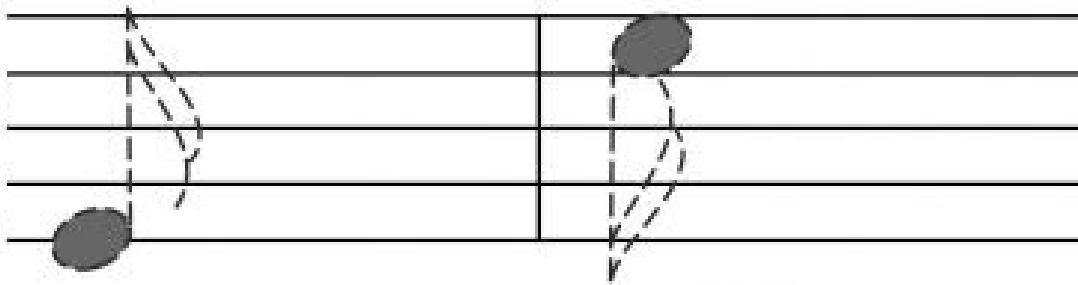
Trace the Sixteenth Note

preview

name _____



Trace the sixteenth note and copy it. Trace the sixteenth note and copy it.



Color the picture.

